

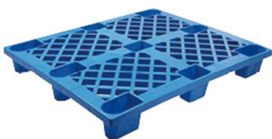


科技提升绿色未来



KLD30

电动堆垛车



适用于单面托盘

产品特点

产品简介

- ◎ 手把式转向操作舒适自如
- ◎ EPS电子助力转向系统能减少操纵力，提高灵敏度，改善转向回正特性，弯道自动减速功能，使用更轻松、安全
- ◎ 立式驱动交流电机，无需更换碳刷，具有更好的坡道启动性能和再生制动功能，能有效的提高电机的工作效率和使用寿命，更加节能
- ◎ ZAPI控制器、ALBRIGHT接触器、AMP防水电源接插件
- ◎ 采用国标1244板式链条代替传统的滚子链条，货物举升操作更安全
- ◎ 独特的驱动减震技术，叉车通过性能更优越
- ◎ 带减震的可折叠式站立踏板
- ◎ 升高后自动断电

可选配置

- ◎ 冷库专用车型
- ◎ 进口蓄电池
- ◎ 大容量蓄电池 270AH / 300AH
- ◎ 锂电
- ◎ 宽腿型定制

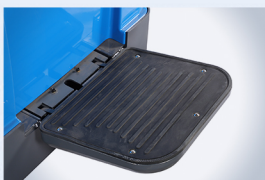
常规配置



操作手柄



防水插件



减震踏板



EPS电转向



驱动减震



防水钥匙开关



ZAPI控制器



板式链条

可选配置



锂电池



侧移器

产品参数

MODEL (型号)

KLD30

Performance (性能)	Maximum load capacity(负载能力)		kg	3000
	load center (载荷中心距)	Q	mm	500
	Maximum lifting height (起升高度)	H3	mm	2500
	Travel speed (without load) (无负载行驶速度)		km/h	6
	Travel speed (with load) (负载行驶速度)		km/h	5.2
	Lifting speed (without load)(无负载起升速度)		mm/s	107
	Lifting speed (with load) (负载起升速度)		mm/s	62
	Lowering speed (without load) (无负载下降速度)		mm/s	54
	Lowering speed (with load) (负载下降速度)		mm/s	53
	Gradeability (without load) (无负载最大爬坡能力)		%	7
Gradeability (with load) (负载最大爬坡能力)		%	6	
Service Weight (with battery) (重量含电池)		kg	1696	
Overall length of frame (整车长度)	L	mm	2169	
Overall length of frame(with platform)(整车长度带踏板)		mm	2585	
Overall width of frame (整车宽度)	B	mm	1046	
Overall height when mast lowered to lowest (门架降至最低整车高度)	H1	mm	1934	
Overall height when mast lifted to highest (门架上升至最高整车高度)	H4	mm	3513	
Wheelbase (轴距)	Y	mm	1596	
Fork length (货叉长度)		mm	1070	
Fork outside width (货叉外侧宽度)	B1	mm	905	
Fork inside width (货叉内侧宽度)	B2	mm	655	
Fork thickness (货叉厚度)		mm	45	
Fork height when fork lowered to lowest (货叉降至最低高度)		mm	70	
Min ground clearance (最小离地间隙)		mm	20	
Theoretical width of minimum aisle for right-angle stacking (1200x1000) (直角堆垛通道最小理论宽度)	Asts	mm	2550	
Minimum turning radius (without platform) (不带踏板最小转弯半径)	Wa	mm	1893	
Minimum turning radius (with platform) (带踏板最小转弯半径)	Wa1	mm	2275	
Front wheel (承载轮)		mm	85*95	
Drive wheel (驱动轮)		mm	260*105	
Caster wheel (平衡轮)		mm	130*55	
Wheel material (车轮类型)		polyurethane (聚氨酯)		
Drive motor type (驱动电机类型)		AC series motor (交流电机)		
Rated output (功率)		kw	3	
Hoist motor type (起升电机类型)		DC series motor (直流电机)		
Rated output (功率)		kw	3	
battery (电池)	Voltag (电压)	V	24	
	Capacity (容量)	AH	210	
	Weight (重量)	kg	195	

载荷曲线图 Load Curve

起升高度 (mm)	500载荷中心距 (kg)	600载荷中心距 (kg)
1600	3000	2500
2000	3000	2500
2500	3000	2500
3000	3000	2500
3500	2700	2250
4000	2500	2080

门架规格

Mast Type 门架类型	Max fork height (货叉最大高度)	Mast lowered (门架降低时高度)	Mast extended (门架延伸时高度)
	KLD30	KLD30	KLD30
Simplex or Duplex mast (2Stage)2级门架	2500	1934	3913
	3000	2184	4023
	3500	2434	4533
	4000	2684	5043

二维线图

