

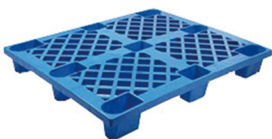


科技提升绿色未来



KLD-DA/K

步行式电动托盘堆垛车



适用于单面 托盘

产品特点

产品简介

- ◎ 机械转向，手把式操作
- ◎ 卧式驱动，驱动轮为可拆卸式更换轮子极为方便
- ◎ 门架加装精密钢制侧滚轮发挥导向作用减少摩擦，有效提高了叉车门架稳定性
- ◎ 采用国标1244板式链条代替传统的滚子链条，货物举升操作更安全
- ◎ 支腿采用实心扁铁，承载强度更高
- ◎ 科力专用控制器、ALBRIGHT接触器、AMP防水电源接插件
- ◎ 电磁式离合器失电刹车、再生制动、反接制动、坡道防下滑制动等多重制动功能
- ◎ 套筒式可调距货叉使用更灵活、更方便
- ◎ 升高后自动断电
- ◎ 实现龟速直立行走

可选配置

- ◎ 冷库专用车型
- ◎ 固定式货叉
- ◎ 宽腿型定制
- ◎ 锂电

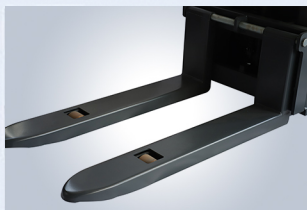
常规配置



操作手柄



防水插件



套筒式可调距货叉



板式链条



科力专用控制器



防水钥匙开关

可选配置



锂电池

产品参数

		MODEL (型号)		KLD16DA	KLD16K
Performance (性能)	Maximum load capacity(负载能力)		kg	1600	1600
	load center (载荷中心距)	Q	mm	600	600
	Maximum lifting height (起升高度)	H3	mm	1600	1600
	Travel speed (without load) (无负载行驶速度)		km/h	5.2	5.2
	Travel speed (with load) (负载行驶速度)		km/h	4.8	4.8
	Lifting speed (without load)(无负载起升速度)		mm/s	121	121
	Lifting speed (with load) (负载起升速度)		mm/s	81	81
	Lowering speed (without load) (无负载下降速度)		mm/s	105	105
	Lowering speed (with load) (负载下降速度)		mm/s	103	103
	Gradeability (without load) (无负载最大爬坡能力)		%	\	\
	Gradeability (with load) (负载最大爬坡能力)		%	\	\
	Service Weight (with battery) (重量含电池)		kg	656	656
	Dimensions (尺寸)	Overall length of frame (整车长度)	L	mm	1896
Overall length of frame(with platform)(整车长度带踏板)			mm	\	\
Overall width of frame (整车宽度)		B	mm	800	800
Overall height when mast lowered to lowest (门架降至最低整车高度)		H1	mm	2090	2090
Overall height when mast lifted to highest (门架上升至最高整车高度)		H4	mm	2090	2090
Wheelbase (轴距)		Y	mm	1328	1328
Fork length (货叉长度)			mm	1150	1150
Fork outside width (货叉外侧宽度)		B1	mm	680	680
Fork inside width (货叉内侧宽度)		B2	mm	340	340
Fork thickness (货叉厚度)			mm	65	65
Fork height when fork lowered to lowest (货叉降至最低高度)			mm	90	90
Min ground clearance (最小离地间隙)			mm	15	15
Tire (轮胎)		Theoretical width of minimum aisle for right-angle stacking (1200x1000) (直角堆垛通道最小理论宽度)	Asts	mm	2415
	Minimum turning radius (最小转弯半径)	Wa	mm	1540	1540
	Minimum turning radius (with platform) (带踏板最小转弯半径)	Wa1	mm	\	\
	Front wheel (承载轮)		mm	85*70	85*70
Electrical components (动力形式)	Drive wheel (驱动轮)		mm	210*75	210*75
	Caster wheel (平衡轮)		mm	130*55	130*55
	Wheel material (车轮类型)			polyurethane (聚氨酯)	
	Drive motor type (驱动电机类型)			DC series motor (直流电机)	
battery (电池)	Rated output (功率)		kw	0.75	0.75
	Hoist motor type (起升电机类型)			DC series motor (直流电机)	
	Rated output (功率)		kw	2.2	2.2
battery (电池)	Voltage (电压)		V	24	24
	Capacity (容量)		AH	80	80
	Weight (重量)		kg	26	26

载荷曲线图 Load Curve

起升高度 (mm)	600载荷中心距 (kg)		
	KLD12D/G/K/A	KLD16D/G/K/E/A	KLD20DS/A
1600	1200	1600	2000
2000	1200	1600	2000
2500	1200	1600	2000
3000	800	1200	1600
3500	600	800	1200

门架规格

Mast Type 门架类型	Max fork height (货叉最大高度)	Mast lowered (门架降低时高度)	Mast extended (门架延伸时高度)
	KLD16DA	KLD16DA	KLD16DA
Simplex or Duplex mast (2Stage)2级门架	2000	1480	2460
	2500	1730	2960
	3000	1980	3460
	3500	2230	3960

二维线图

